

ESSENTIAL WORKERS

KEEPING EVERYONE SAFE

Who are our
nation's essential
workers?
This guide will
help answer your
questions.



STEINBERG

LAW FIRM | LLP

GET THE FIRM BEHIND YOU

ESSENTIAL WORKERS

Who is an essential worker?

Much is being written about how critical the essential workforce is in keeping everyone in the U.S. safe and healthy during the COVID-19 outbreak, while supporting the economy to as great a degree as possible. And deservedly so. Essential workers risk their lives everyday.

While some essential workers, like those in healthcare, are very high profile, others are less well-defined. Adding to this confusion is the fact that governors and even local authorities have some leeway with which to declare workers to be essential in their states or districts. However, concrete guidelines for classifying essential workers do exist. The U.S. Department of Homeland Security has issued guidelines outlining who is an essential worker during the COVID-19 pandemic. This guidance includes the following:

HEALTHCARE & PUBLIC HEALTH

Healthcare workers are perhaps the most recognized category of front-line essential workers. The definition of a healthcare worker includes:

DOCTORS & NURSES



Doctors, nurses, assistants, physical therapists, mental health professionals, rehabilitation specialists, social workers, home healthcare, hospice, long-term care workers and veterinarians

PHARMACY & LAB

Pharmacists, technicians, pathologists, lab technicians, blood bank workers and researchers

ADMINISTRATION & SUPPORT

Accounting, admitting/discharge, food service, security housekeeping, nutritionists and IT specialists (who cannot practically work remotely)

MANUFACTURING

Manufacturers & distributors of medical equipment, personal protective equipment, pharmaceuticals, vaccines, testing materials, laboratory supplies, cleaning and sanitizing, disinfecting and sterilization supplies

PUBLIC HEALTH

Community clinics & mental health; workers conducting research critical to COVID-19 response; workers who support food, shelter, social services and necessities of life for economically disadvantaged or needy individuals

PUBLIC SAFETY

LAW ENFORCEMENT & EMERGENCY

Police, firefighters, EMTs, 911 call center operators, emergency managers and HAZMAT responders

ESSENTIAL WORKERS

Who is an essential worker?

FOOD & AGRICULTURE

Everyone recognizes the people working in grocery stores and providing take out, however this category of essential workers includes all moving pieces of the food chain:

GROCERY

Workers in stores that sell food & beverages and supporting workers

RESTAURANT

Carry-out, food delivery and company cafeterias (in-plant cafeterias)

FARMING

Farmworkers (including those producing animal feed) food inspection, food storage and food distribution

MANUFACTURING

Workers involved in food processing (including animal feed); food packaging; sanitation; food testing; the production of pesticides, fertilizers and animal vaccines; the production of agricultural equipment; and the support the manufacture and distribution of forest products, including timber and paper

FOOD ASSISTANCE PROGRAM WORKERS

Anyone involved in administration & distribution of assistance, including food banks

ENERGY & CHEMICAL

This category consists of workers who maintain, ensure, or restore the reliable generation, transmission, and distribution of electric power, petroleum, natural gas and propane.



EXTRACTION

Extraction, production, processing, refining, transporting, storage and pipeline

SUPPORT

Call center employees; security and risk management; utility workers; reliability engineers, fleet maintenance technicians; workers supporting the chemical and industrial gas supply chains; workers at chemical manufacturing plants, workers in laboratories; workers who transport basic raw chemical materials to producers of industrial and consumer goods, including hand sanitizers, food and food additives, pharmaceuticals, textiles, and paper products

RETAIL

Retail fuel centers such as gas stations and truck stops, and the distribution systems that support them

TRANSPORTATION, DELIVERY & LOGISTICS

TRANSPORTATION FUNCTIONS

Dispatchers, maintenance and repair technicians, warehouse workers, and workers that maintain infrastructure

PUBLIC TRANSPORTATION

Mass transit and passenger rail workers; maritime transportation workers; those critical to operating rental car companies; and air and cargo transportation employees, including vendors providing services for air passengers and vendors providing maintenance services to public transit authorities



ESSENTIAL WORKERS

Who is an essential worker?

TRANSPORTATION, DELIVERY & LOGISTICS

DELIVERY

Postal and shipping workers including private companies, and moving companies

REPAIR

Automotive repair, aircraft repair, maritime repair, and workers who maintain rail equipment and the infrastructure that enables the movement of cargo and passengers

PUBLIC WORKS

These essential workers support the operation, inspection, and maintenance of essential dams, roads, bridges, water and sewer mains, and the construction of critical or strategic infrastructure, like traffic signals

RESIDENTIAL SAFETY & SANITATION

Plumbers, electricians, exterminators, inspectors, sanitation workers and those who provide services necessary to maintain the safety, sanitation, and essential operation of residences

PARKS

Workers who support the operation, maintenance and public safety of state parks, forests, wildlife management areas, water supply protection lands, and critical natural resources

FINANCIAL SERVICES

Banking employees, and workers who maintain financial transaction systems who cannot reasonably work from home

COMMUNITY, GOVERNMENT & DEFENSE

COMMUNITY

Educators, hotel workers, laundry, workers in sober homes, legal and payroll services, and workers at places of worship

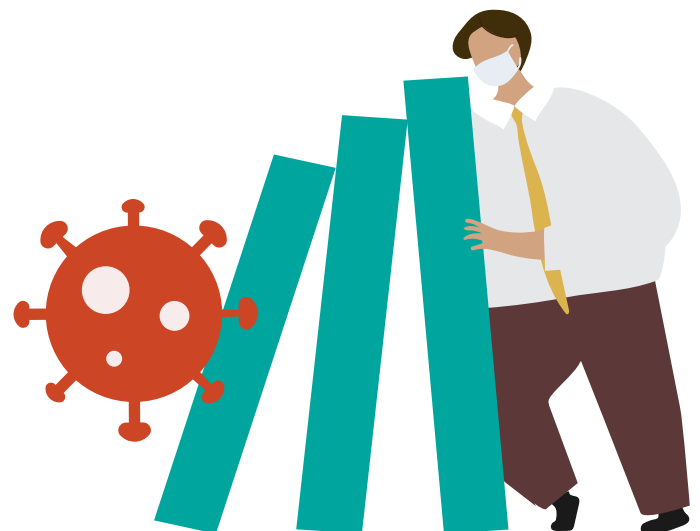
GOVERNMENT

Elections personnel, janitorial & security services supporting critical government functions, workers who provide services for those eligible for public benefits

DEFENSE

Workers who support the essential services required to meet national security commitments to the federal government and U.S. Military, including contractors

THANK YOU ESSENTIAL WORKERS!



Not an essential worker? Here's what you can do.

STAY CALM



- When grocery shopping, purchase only the items you will need for one to two weeks
- Do not hoard; remember others also need supplies
- Consider delivery personnel, and try to order only essential items when shopping online

STAY AT HOME



- Run errands only when they are essential
- Designate a household errand runner if possible
- If you have to visit a store in person, go during hours when fewer people will be there (early morning or late night)

WASH YOUR HANDS



- Before and after running essential errands, wash your hands with soap and water for at least 20 seconds
- If you have to go out, disinfect the surfaces you touch, like shopping carts and gas pumps
- Do not touch your eyes, nose, or mouth

KEEP YOUR DISTANCE



- Stay at least 6 feet away from others
- Perform essential tasks, like banking, online if possible
- Cover your mouth and nose with a cloth face covering when you have to go out in public